

SYNOVEX[®] S

(progesterone and estradiol benzoate implants)

200 mg progesterone and 20 mg estradiol benzoate per implant

STEER IMPLANTS

For increased rate of weight gain and improved feed efficiency

For additional improvement in rate of weight gain in steers fed in confinement for slaughter, reimplant at approximately 70 days.

NOTE: Studies have demonstrated that reimplantation of Synovex S can decrease marbling scores when compared to non-implanted controls.

This product was manufactured by a non-sterilizing process.



Important: Read ALL sides of carton
For Steers Only
Do Not Use In Veal Calves
Not For Use In Humans
For Animal Use Only

For subcutaneous ear implantation only.
Approved by FDA under NADA # 009-576

zoetis

NET CONTENTS: 10 CARTRIDGES (100 DOSES)
Each Cartridge Contains 10 Rows of 8 Pellets.

Restricted Drug (California) — Use Only as Directed

WARNING: Not for use in humans. For animal use only. Implant pellets in the ear only. Any other location is in violation of federal law. Do not attempt salvage of implanted site for human or animal food.

A withdrawal period has not been established for this product in pre-ruminating calves. Do not use in calves to be processed for veal.

HAZARDOUS: Keep this and all drugs out of the reach of children.

CAUTION: Bulling, rectal prolapse, ventral edema and elevated tailheads have occasionally been reported in steers administered with Synovex S implants.

HOW TO IMPLANT WITH

SYNOVEX® S

(progesterone and estradiol benzoate implants)

200 mg progesterone and 20 mg estradiol benzoate per implant

PELLETS

Study the following instructions carefully, then proceed step by step, until the technique becomes routine. Many head can be implanted per hour by an experienced team, one member of which should be assigned to do nothing but the implantation. This person should maintain hand cleanliness and use sanitary instruments only.

HOW SUPPLIED

100 Dose

SYNOVEX® S

(progesterone and estradiol benzoate implants)

200 mg progesterone and 20 mg estradiol benzoate per implant

Implants

Synovex S (progesterone and estradiol benzoate implants) is recommended for use in steers weighing 400 lbs or more.

When properly administered, Synovex S implants increase rate of weight gain and improve feed efficiency. Do not use in veal calves. Effectiveness and animal safety in veal calves have not been established.

Store at controlled room temperature 20°-25°C (68°-77°F) with excursions between 15°-30°C (59°-86°F). Avoid excessive heat or humidity.

WARNING

Not for use in humans. For animal use only. Implant pellets in the ear only. Any other location is in violation of federal law. Do not attempt salvage of implanted site for human or animal food.

A withdrawal period has not been established for this product in pre-ruminating calves. Do not use in calves to be processed for veal.

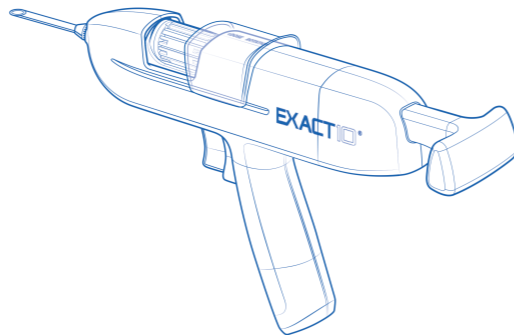
CAUTION

Bulling, rectal prolapse, ventral edema and elevated tailheads have been occasionally reported in steers administered with Synovex S implants.

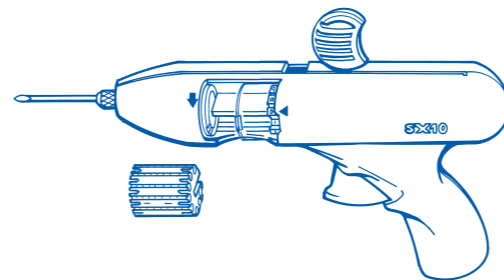
Keep this and all drugs out of the reach of children.

Restricted Drug (California)—
Use Only as Directed.

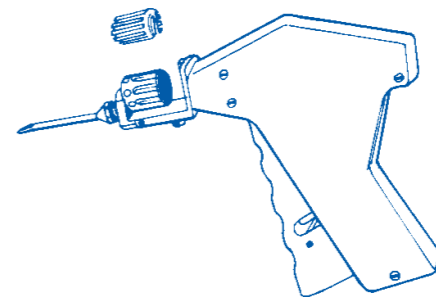
SYNOVEX® EXACT 10® Applicator



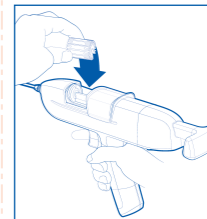
SYNOVEX® SX10 Applicator



SYNOVEX® Metal Revolver



STEP 1 Loading the Applicator



Load the applicator following the directions outlined in the instruction manual accompanying each applicator.

Additional information for the individual applicator user guides can be found at:

www.growwithsynovex.com.

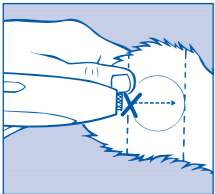
STEP 2 Restraint



The animal must be confined in a restraint mechanism (squeeze chute or head gate). The implant site on the back of the ear should be prepared by scrubbing with a firm bristled brush that has been soaked in a germicidal solution.

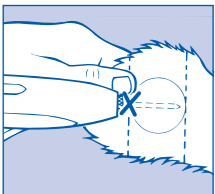
Note: If implanting horned cattle, greater safety is provided when the head is controlled by the use of a bull lead (nose tongs).

STEP 3 Implant Site



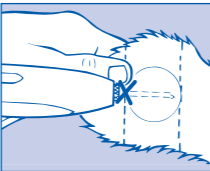
Divide the ear into three imaginary sections as illustrated. The implanted pellets should be deposited in the center one-third of the ear as shown. To accomplish this, the applicator needle should be inserted in the **outer** one-third of the ear as indicated by the "X" in the illustration. Implanting too close to the head may cause abnormal sexual behavior. Care should be taken to avoid severing the major arteries of the ear.

STEP 4 Insert Needle



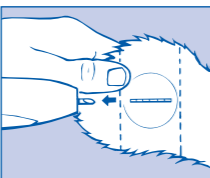
Grasp the ear with one hand. While holding the applicator firmly with the other hand, penetrate the skin at the point shown by the "X". Thrust the needle under the skin taking care not to penetrate the cartilage. Ease the applicator forward (toward the base of the ear) until the full needle length is beneath the skin.

STEP 5 Pellet Implantation



When the needle is completely inserted, activate the instrument by squeezing the trigger completely. Refer to instructions for individual applicator.

STEP 6 Inspection



Check the implant site. If properly administered, the implants should lie in a straight line under the skin. Re-cock the applicator. Disinfect the applicator needle in a germicidal solution. The applicator is now ready to implant the next animal.

Distributed by:
Zoetis Inc.
Kalamazoo, MI 49007

BACK/LAST PAGE -
GLUE PANEL

NO INK/NO COPY AREA

200 mg progesterone and 20 mg
estradiol benzoate per implant

STEER IMPLANTS

For Increased Rate of
Weight Gain and
Improved Feed Efficiency

For additional improvement in rate of
weight gain in steers fed in
confinement for slaughter,
reimplant at approximately 70 days.

NOTE: Studies have demonstrated
that reimplantation of Synovex S can
decrease marbling scores when
compared to non-implanted controls.

This product was manufactured by a
non-sterilizing process.

Do Not Use In Veal Calves
Not For Use In Humans
For Animal Use Only

zoetis

Approved by FDA under NADA # 009-576

40031050

SYNOVEX[®] S
(progesterone and estradiol benzoate implants)

FPO Vendor BARCODE